

FUQING LVL SCAFFOLDING PLANKS



30 300,000m²
Manufacturing base

35 350,000m²
Annual capacity

35 Years
Experience in plate
manufacturing

18 Years
TOP 1 in export market

Core advantage: high-end LVL scaffolding manufacturer


- **Price**--Better quality at the same price, better price at the same quality
- **Production advantage**--The whole industry chain from rotary cutting to finished product
- **Service**--One to one technical guidance
- **Testing Capability**--Professional laboratory, testing equipment and methods



Office: Fuqing Shanghai
Address: No.2902 Room, 166 Street, Minhong Road, Minhang District, Shanghai
Factory location in China: Fuqing Wood
Address: Changfu Road, Lanhong Village, Qingyihu Town, Shuyang County, Jiangsu, China
Factory location in Vietnam: Fuqing Vietnam
Address: Heyi Village, Shengxing town, Anping County, Yenbai Province, Vietnam
Tel: 0527-8063 3096
E-mail: postmaster@fuqingmuye.com
Web: <http://www.fuqingmuye.com>

FUQING LVL Scaffolding Specification

| FUQING LVL Scaffolding Specification | | |
|--------------------------------------|--------------------------------|-------------------|
| Species | Radiata pine/Masson pine/Larch | |
| Dimensions | thickness | 38/42/63mm |
| | width | 225/230mm |
| | length | 3/4/6m/customized |



| | |
|-------------------|--------------------------------|
| Glue | melamine/phenolic adhesive |
| Moisture | 8-16% |
| MOE | 7000-14000 Mpa |
| Surface treatment | Chamfered, painted sealed ends |
| Standard | OSHA 1926, AS/NZS 1577 |

Quality Control and Structural Verification

FUQING LVL Scaffolding is manufactured under the procedures of the OSHA 1926 standard.

Each FUQING LVL Scaffolding is individually proof tested to verify the strength of each plank exceeds the bending moment requirements for the working loads set out in the Live Load Duty Category Table .



Office: Fuqing Shanghai
 Address: No.2902 Room, 166 Street, Minhong Road, Minhang District, Shanghai
 Factory location in China: Fuqing Wood
 Address: Changfu Road, Lanhong Village, Qingyihu Town, Shuyang County, Jiangsu, China
 Factory location in Vietnam: Fuqing Vietnam
 Address: Heyi Village, Shengxing town, Anping County, Yenbai Province, Vietnam
 Tel: 0527-8063 3096
 E-mail: postmaster@fuqingmuye.com
 Web: <http://www.fuqingmuye.com>

Scaffold Platform Duty Categories

The maximum span is calculated as the following intended load

| Rated load capacity | | Load point | Maximum intended load |
|---------------------------------|--------------|---|-----------------------|
| Uniformly distributed load(UDL) | Light-duty | Uniformly distributed load within span | 25psf |
| | Medium-duty | Uniformly distributed load within span | 50psf |
| | Heavy-duty | Uniformly distributed load within span | 75psf |
| Point load(PL) | One-person | Load at midspan | 250lbs |
| | Two-person | A load of 250 pounds on each side 18 inches from midspan | 500lbs |
| | Three-person | Load of 250 pounds on midspan and each side 18 inches from midspan (3 points) | 750lbs |

1psf=0.0478kN/m²; 1lbs=0.453kg; 1in=25.4mm

FUQING LVL Scaffolding Span and Load Tables

Span table

Scaffold platform duty categories(as per AS/NZS 1576&1577)

| Live load duty category | Maximum span(m) | Working load limit(WLL) |
|-------------------------|-----------------|------------------------------------|
| Light duty | 2.4 | 2.2kN(inc 1.2kN concentrated load) |
| Medium duty | 2.0 | 4.4kN(inc 1.5kN concentrated load) |
| Heavy duty | 1.8 | 6.6kN(inc 2.0kN concentrated load) |

1kN is approximately 100kg

Office:Fuqing Shanghai

Address: No.2902 Room,166 Street,Minhong Road,Minhang District,Shanghai

Factory location in China:Fuqing Wood

Address:Changfu Road,Lanhong Village,Qingyihu Town,shuyang County,Jiangsu,China

Factory location in Vietnam:Fuqing Vietnam

Address:Heyi Village,shengxing town,Anping County,Yenbai Province,vietnam

Tel:0527-8063 3096

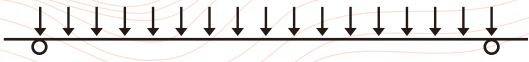
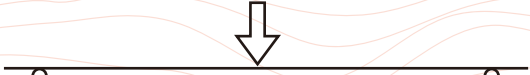
E-mail:postmaster@fuqingmuye.com

Web:http://www.fuqingmuye.com



Load Table

Drawing of uniformly distributed load and point load

| uniformly distributed load(UDL) | point load(PL) |
|---|--|
| <p>Uniformly Distributed Load</p>  | <p>Point Load</p>  |
| Application uniformly distributed | Application at one point |

Storage and Maintenance Methods

■ A. Mold Growth

- 1.Clean and dry the affected boards.
- 2.Inspect for soft spots or signs of decay.
- 3.If no decay is found, conduct quality testing and return verified boards for repair.

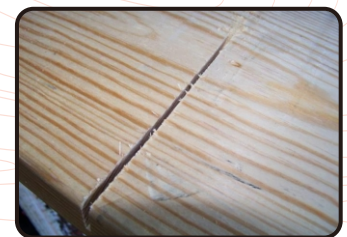
■ B. Burn Marks

- 1.Conduct sample testing to assess repair feasibility.
- 2.If the defect cannot be removed, discard the board.



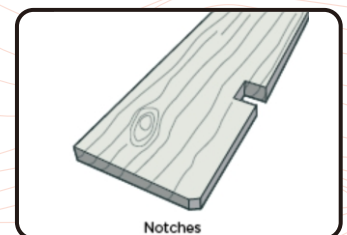
■ C. Saw Marks

- 1.Trim to remove the defective area.
- 2.If the defect cannot be fully eliminated, discard the board.



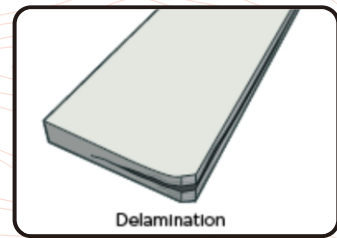
■ D. Notches

- 1.Trim to remove the defect.
- 2.If removal is not possible, discard the board.



■ E. Delamination

Discard the board to prevent structural integrity issues.

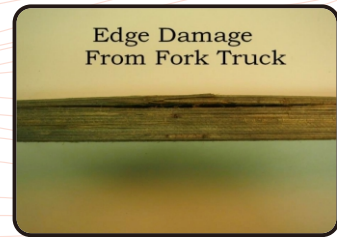


■ F. End Splits

1. Surface cracks: No action required.
2. Through cracks: Require evaluation by a professional.
3. If the crack extends beyond the board width: Wrap or apply protective coating to the ends.

■ G. Forklift Damage

If side edges are damaged, discard the board immediately.



■ H. Warping

1. For cupping or warping, place the board in a dry environment for recovery.
2. If the original shape is not restored, further verification is required.



■ I. Discoloration

1. Mild discoloration: No action required.
2. Severe discoloration: Requires quality assessment.



■ J. Bow, Crook, and Twist

Boards with these deformations must be evaluated before use.

